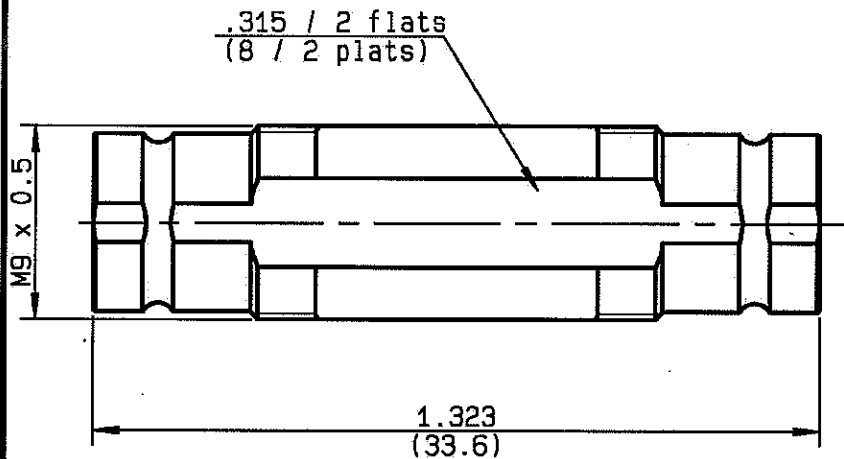


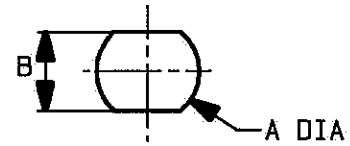
FEMALE-FEMALE ADAPTOR

R129.704.215

SERIES V1.6-5.6



PERCAGE PANNEAU
MOUNTING HOLE



	MM		INCH	
	maxi	mini	maxi	mini
A	9.15	9.05	0.36	0.36
B	8.2	8.1	0.323	0.319

NOMINAL IMPEDANCE	75 Ω
FREQUENCY RANGE	0-1 GHz
TEMPERATURE RATING	-40/+155 °C
V.S.W.R	1.10 + x F(GHz)Maxi
RF INSERTION LOSS	\sqrt{F} (GHz) dB Maxi
VOLTAGE RATING	330 Veff Maxi
DIELECTRIC WITHSTANDING VOLTAGE	1000 Veff Mini
INSULATION RESISTANCE	10000 M Ω Mini
HERMETIC SEAL	NA Atm.cm ³ /s
LEAKAGE (pressurized only)	NA
MECHANICAL DURABILITY	1000 Cycles
WEIGHT	gr
SPECIFICATION	

CABLES :	
OTHERS CHARACTERISTICS	
CABLE RETENTION	NA N Mini
CENTER CONTACT RETENTION	
Axial force - mating end	30 N Mini
Axial force - opposite end	30 N Mini
Torque	cm.N Mini
RECOMMENDED TORQUES	
Mating	cm.N
Panel nut	NA cm.N
Clamp nut	NA cm.N

CONNECTOR PARTS:	MATERIALS	FINISH	(all values are given in micrometers)
BODY	BRASS	GOLD 0.5 OVER NICKEL 2	
OUTER CONTACT	BRASS	GOLD 0.5 OVER NICKEL 2	
CENTER CONTACT	BERYLLIUM COPPER	GOLD 1.3 OVER NICKEL 2	
INSULATOR	PTFE	-	
GASKET		-	
OTHERS PIECES			

TRIGUES

ISSUE 0814B00	CREATION DATE 03/02/1997	FILE PART-NUMBER EPC 96-04
-------------------------	------------------------------------	--------------------------------------



The information given here is subject to change without notice.
Design changes may be in order to improve the product.

Connect to the future